



Tiffany Gardens

East Hunsbury, Northampton

oriordanbond
SALES & LETTINGS



Tiffany Gardens

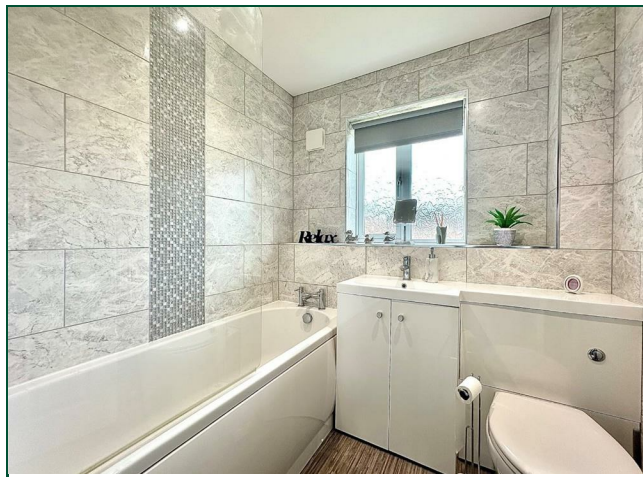
East Hunsbury
NN4 0TJ

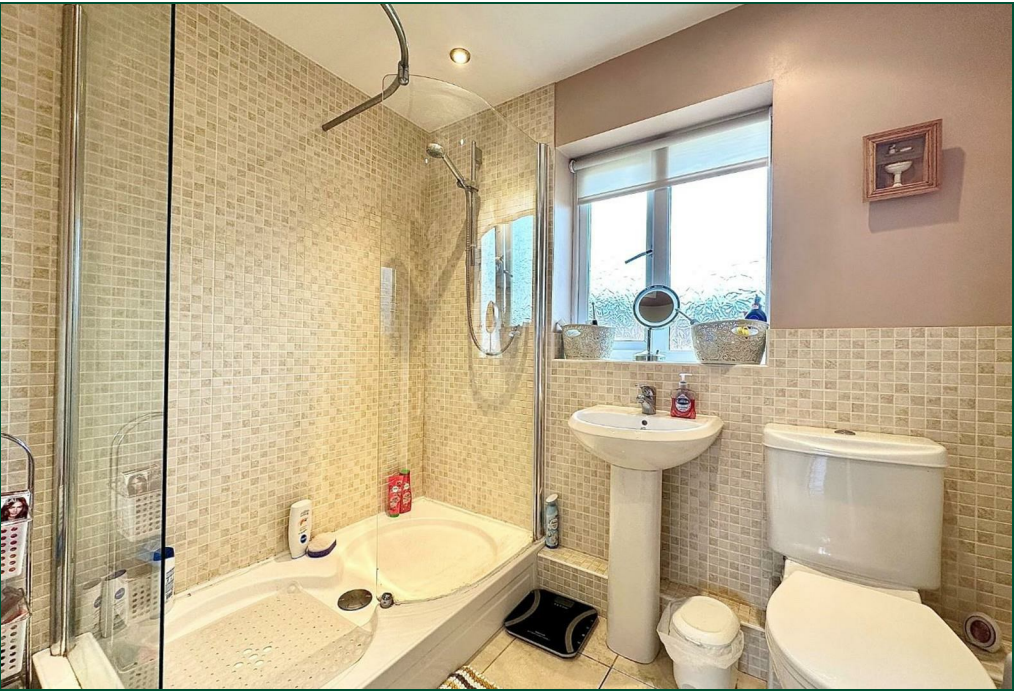
Guide Price
£375,000

An immaculately presented four bedroom detached family home, situated in a cul-de-sac, within the desirable area of East Hunsbury. This property has been extended and modernised by the current owners and provides generous accommodation over two floors.

Entrance hall, a good size sitting room with bay window, a fabulous kitchen/dining room with integrated appliances, a separate utility/laundry room and a re-fitted cloakroom/WC. To the first floor is access to the loft space, an airing cupboard, doors to four ample bedrooms with a re-fitted en-suite to the master and a separate re-fitted family bathroom. Outside is a lawned garden to the front and driveway leading to an integral single garage. To the rear is an easterly facing garden with paved patio area leading to a manicured lawn with timber decked area and timber fencing to enclose. Further benefits include uPVC double glazing and gas radiator heating. (A/1162/M)

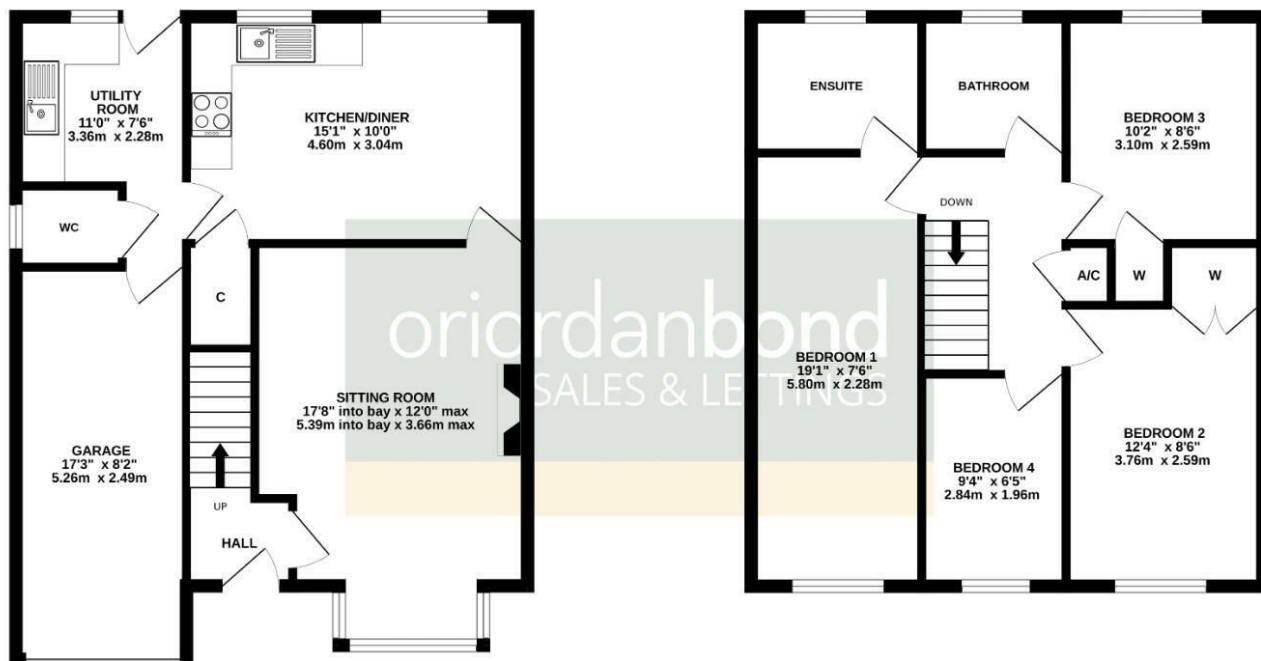
- Immaculate four bedroom detached home
- Re-fitted en-suite to master bedroom
- Kitchen/dining room with integrated appliances
- Gas radiator heating
- Enclosed easterly facing rear garden
- Driveway and integral garage





GROUND FLOOR
599 sq.ft. (55.7 sq.m.) approx.

1ST FLOOR
563 sq.ft. (52.3 sq.m.) approx.



TOTAL FLOOR AREA : 1162 sq.ft. (108.0 sq.m.) approx.

Whilst every attempt has been made to ensure the accuracy of the floorplan contained here, measurements of doors, windows, rooms and any other items are approximate and no responsibility is taken for any error, omission or mis-statement. This plan is for illustrative purposes only and should be used as such by any prospective purchaser. The services, systems and appliances shown have not been tested and no guarantee as to their operability or efficiency can be given.
Made with Metropix ©2025



Additional information

- Council Tax Band: C
- Energy Efficiency Rating: D

Viewing

Viewing strictly by appointment – details below

Disclaimer

O'Riordan Bond Estate Agents Limited has not tested apparatus, equipment, fittings or services and so cannot verify they are in working order. The buyer is advised to obtain verification from their solicitor or surveyor.

O'Riordan Bond Hunsbury Sales

01604 706007

hunsbury@oriordanbond.co.uk

